

Stride *Lite*



Diabetic Shoes • Diabetic Inserts • Custom Foot Orthotics • AFOs



Meeting Your Lower Extremity Needs

At StrideLite, our mission is to provide quality Diabetic Shoes, Custom Inserts, Custom Foot Orthotics and AFO's at the most reasonable price possible. We believe that our commitment to exceptional customer service, products and programs has allowed us to earn the trust of our customers.

Catalog Contents:

Men's Shoes 3

Women's Shoes..... 4

Custom Foot Orthotics..... 5

Custom Orthotics Functional 6

Custom Orthotics Functional 7

Custom Orthotics Functional-Dress 8

Custom Orthotic Functional-Sport 9

Custom Orthotic Functional-Hybrids 11

Custom Orthotics Functional Composites..... 12

Custom Orthotics Accommodative 13

Custom Orthotics Pediatrics 14

Off the Shelf Orthotics 15

Diabetic Inserts 16

Leather Gauntlet AFO's..... 17

Summit Stabilizer..... 18

AFO's Plastics 19

Copper Socks 21

Diabetic Socks 22

3D Scanner Options 23



Men's Shoes

Stride
Lite



Ross
109-01



Boston II
M 1727-01



Crane
900-00



Eagle
1801-01



Flex
M 1359 GY



Falcon
1800-01



Savannah
400-01



Blue Jay
1637-04



Spirit
M 1778 BL



Heron
901-00



Carolina
100-01



Robert
2207-01



Flex
M 1359 BK



Journey II
M 1487-01



Andrew
2404-01



Cardinal
1637-73



Sydney
1858-01



Bobby
2208-01



Raven
800-01

Sport
Flex
Classic
Vintage
Executive
Boots

Men's Sizes:

8	10.5
8.5	11
9	11.5
9.5	12
10	13

Please call for
additional sizes
not listed that may
be available.

Widths: Medium, Wide, Extra Wide

Lightweight
Comfortable
Covered by Medicare



Women's Shoes



Crane
900-00



Flex
F 1359 BK



Spirit
F 1778 BL



Tiffany
120-01



Falcon
1800-01



Carolina
100-01



Eagle
1801-01



Lindsey
132-01



Flex
F 1359 PR



Cardinal
1637-73



Savannah
400-01



Sydney
1858-01



Blue Jay
1637-04



Wendy
101-01



Heron
901-00



Flex
F 1359 GY



Raven
800-01



Flex
F 1359 PK

Women's Sizes:

5	7.5	10
5.5	8	10.5
6	8.5	11
6.5	9	11.5
7	9.5	12

Please call for
additional sizes
not listed that
may be available.

Lightweight
Comfortable
Covered by Medicare

Sport
Flex
Classic
Vintage

Widths: Medium, Wide, Extra Wide

Flat Competitive Rate on all Devices!

We keep in mind that appearance is just as important as function when dispensing a pair of orthotics to your patient. You can rest assured that our products provide exceptional function as well as being aesthetically appealing, providing your patient superb satisfaction at a competitive price.

Providing the highest level of service with truly a custom device.

- **Unmatched personalized service**
- Product pricing 25-40% lower than many other labs
- Five business day turn around time
- Lifetime guarantee on orthotic shell
- Licensed personnel
- Warranty programs
- Cutting-edge technology and software
- Prepaid shipping labels provided
- **Flat competitive rate includes postings and accommodations!**
- Six month free adjustment policy
- Consistent and reliable products



If you do not see what you are looking for in this product guide, we encourage doctors to call to customize their own devices. Your preferences will be put on file with our lab to individualize your orthotic choices. Custom order forms will be provided based on your preferences making the ordering process seamless for you and your staff!

Our Goal is to offer you seamless ordering options tailored to your preferences and reliability you can depend on!



All functional devices are made of polypropylene, available in different rigidities based on patient height and activity: Rigid, Semi Rigid, Semi Flexible and Flexible. Pricing includes standard covers and accommodations.

Inno-Tech

Unibody construction, extrinsically posted device is perfect for everyday use.

Indications: Pes planus (flatfoot), plantar fasciitis, generalized foot pain, heel spurs, metatarsalgia.

Design Specifications:

- Material: Polypropylene shell that can be milled to any desired rigidity.
- Heel Seat: 12mm
- Posting: Intrinsic Forefoot and extrinsic rearfoot posts (unibody construction).
- Top Cover: Met length Leather-hybrid is standard
- Bottom Cover: 1/16" Cloud



Inno-Tech Casual

Low bulk design and versatility make it perfect for everyday use.

Indications: Plantar fasciitis, metatarsalgia, sesamoiditis, mild pronation.

Design Specifications:

- Material: Polypropylene shell that can be milled to any desired rigidity.
- Heel Seat: 12mm
- Posting: Intrinsic Forefoot and rearfoot posts are standard
- Top Cover: Sulcus length Leather-hybrid is standard
- Bottom Cover: 1/16" Cloud



All functional devices are made of polypropylene, available in different rigidities based on patient height and activity: Rigid, Semi Rigid, Semi Flexible and Flexible. Pricing includes standard covers and accommodations.

Inno-Tech Classic

Similar to the Inno-Tech, but with crepe rearfoot post which acts as a shock absorber at heel strike.

Indications: Pes planus (flatfoot), Plantar fasciitis, generalized foot pain, heel spurs, metatarsalgia.

Design Specifications:

- Material: Polypropylene shell that can be milled to any desired rigidity.
- Heel Seat: 12mm
- Posting: Intrinsic forefoot and extrinsic rearfoot posts.
- Top Cover: Full length 1/8" Cloud is standard.
- Bottom Cover: 1/16" Cloud Extension Only.



Easy Stride

Developed for day-to-day use for common foot discomfort and fatigue. Maintains the foot in proper position providing ideal relief

Design Specifications:

- Semi Flexible Polypropylene Shell
- Rearfoot Posting: Intrinsic
- Forefoot Posting: Intrinsic
- 1/8" Microcell Top Cover with Microcell Bottom





Elite

Developed to soothe postural back pain, foot , or leg pain associated with narrow dress shoes and high heels.

Design Specifications:

- Semi Rigid Polypropylene Shell with Narrow Dress Grind
- Rearfoot Posting: Intrinsic
- Forefoot Posting: Intrinsic
- Bioskin Top Cover with Non-Slip Bottom

Inno-Tech Stiletto

Slim-fitting device, hourglass shape specifically created for women's dress shoes.

Indications: Any case where limited space is available in shoes and a high level of rigidity is required.

Designed specifically for plantar fasciitis, metatarsalgia, sesamoiditis and mild pronation for women who wear stiletto style shoes.

Design Specifications:

- Material: Polypropylene shell that can be milled to any desired rigidity.
- Heel Seat: 5mm (Limited rearfoot control)
- Posting: Intrinsic forefoot and rearfoot posts are standard
- Top Cover: Sulcus length Leather-hybrid is standard
- Bottom Cover: Ultrasuede



All functional devices are made of polypropylene, available in different rigidities based on patient height and activity: Rigid, Semi Rigid, Semi Flexible and Flexible. Pricing includes standard covers and accommodations.



Icon

Semi Rigid control, sheer reduction, and shock dissipation makes this an exceptional choice for individuals displaying rapid medial to lateral movements.

Indications: Stress, over use, fatigue, lateral ankle instability, Pes planus (flatfoot), shin splints, plantar fasciitis, generalized foot pain.

Design Specifications:

- Material: Semi-Rigid polypropylene shell
- Heel Seat: 15mm
- Posting: Intrinsic forefoot and extrinsic rearfoot posts are standard.
- Top Cover: Full length 1/8" Crosslink is standard
- Bottom Cover: Full length 1/16" Cloud is standard

Impact

Exceptional level of control and shock absorption with high density hybrid rear-foot post.

Indications: Stress, overuse, fatigue, Pes planus (flatfoot), shin splints, plantar fasciitis, generalized foot pain.

Design Specifications:

- Material: Semi Rigid polypropylene shell
- Heel Seat: 15mm
- Posting: Intrinsic forefoot and extrinsic rearfoot posts are standard.
- Top Cover: Full length 1/8" Cloud is standard
- Bottom Cover: Full length 1/16" Cloud is standard



All functional devices are made of polypropylene, available in different rigidities based on patient height and activity: Rigid, Semi Rigid, Semi Flexible and Flexible. Pricing includes standard covers and accommodations.



Extreme

Sports orthotic that provides moderate biomechanical control while fitting into slim shoe gear. Ideal for cleats.

Indications: Any case where limited space is available in shoes (i.e. loafers or dress shoes). Can also be used in athletic activities such as soccer or track where a low profile shoe gear is required. Shin splints, plantar fasciitis, pes planus (flatfoot), general foot pain, stress/overuse, hallux rigiditis.

Design Specifications:

- Material: Semi Rigid polypropylene shell
- Heel Seat: 15mm
- Posting: Intrinsic forefoot and rearfoot posts are standard.
- Top Cover: Full length 1/8" Swirl is standard
- Bottom Cover: Full length 1/16" Cloud is standard

Endurance

Developed for individuals with active lifestyles, providing ultimate biomechanical control.

Design Specifications:

- Material: Semi Rigid polypropylene shell
- Rear Foot Posting: Extrinsic
- Fore Foot Posting: Intrinsic
- Bottom Cover: 1/8" Neolon Top Cover with non-slip bottom



All functional devices are made of polypropylene, available in different rigidities based on patient height and activity: Rigid, Semi Rigid, Semi Flexible and Flexible. Pricing includes standard covers and accommodations.

Versa-Tech



Hybrid device designed to provide moderate control while providing forgiveness throughout the gait cycle.

Indications: Pes cavus, rheumatoid arthritis, posterior tibial dysfunction, tarsal tunnel syndrome, controlled diabetes, shin splints and metatarsalgia.

Design Specifications:

- Material: Semi Rigid polypropylene shell
- Heel Seat: 15mm
- Posting: Intrinsic forefoot and extrinsic rearfoot posts are standard.
- Top Cover: Full length 1/8" Cloud is standard
- Bottom Cover: 1/16" Cloud

Multi-Tech

Hybrid device engineered to provide passive control: low level mid-foot and rearfoot control.

Indications: Pes cavus, rheumatoid arthritis, posterior tibial dysfunction, tarsal tunnel syndrome, controlled diabetes, shin splints and metatarsalgia.

Design Specifications:

- Material: Semi Rigid polypropylene shell
- Heel Seat: 12mm
- Posting: Intrinsic forefoot posts and extrinsic rearfoot posts are standard
- Top Cover: Full length 1/8" Cross-Link is standard



Pricing includes standard covers and accommodations.



Thinnovate

Biomechanically controlling continuous fiber reinforced, thermoplastic orthotic. Ideal choice for patients that need a slim, yet rigid device.

Indications: Useful for the correction and management of biomechanical problems such as forefoot and rearfoot varus and valgus deficiencies as well as heel spurs, plantar fasciitis, hallux deformities and midtarsal joint function limitation.

Design Specifications:

- Material: Continuous fiber reinforced thermoplastic
- Heel Seat 12mm
- Posting: Intrinsic forefoot and extrinsic rearfoot posts are standard
- Top Cover: Met Length leather-hybrid is standard

Thinnovate Stiletto

Pressed from continuous fiber reinforced thermoplastic material, ideal rigid slim fitting device.

Indications: Any case where limited space is available in shoes and a high level of rigidity is required. Designed specifically for plantar fasciitis, metatarsalgia, sesamoiditis, and mild pronation for women who wear stiletto style shoes.

Design Specifications:

- Material: Continuous fiber reinforced thermoplastic
- Heel Seat: 4mm
- Posting: Intrinsic forefoot and rearfoot posts are standard
- Top Cover: Sulcus length leather-hybrid is standard





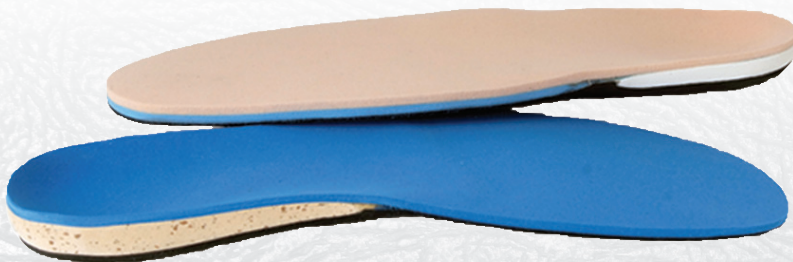
Inno-Flex

Highly flexible shell with superior rear foot control, perfect for arthritis or individuals with a limited range of motion.

Indications: General foot fatigue, arthritis, diabetes, moderate forefoot varus or valgus, plantar fasciitis, forefoot lesions, fat pad atrophy, amputees.

Design Specifications:

- Material: Flexible polypropylene shell with low durometer EVA arch reinforcement.
- Heel Seat: 15mm
- Posting: Intrinsic forefoot and extrinsic rearfoot posts are standard.
- Top Cover: Full length 1/8" Cloud is standard
- Bottom Cover: Full length 1/16" Cloud is standard



Crepe

Multidensity crepe material best matched for sensitive feet needing cushioning and flexibility.

Cork

Multidensity cork material for patients who require additional accommodation and protection

Design Specifications: Cork Or Crepe Shell

- Rear Foot Posting: Intrinsic
- Fore Foot Posting: Intrinsic
- 1/8 Plastazote Top Cover with 1/8 Poron Cushioning



Pediatric devices, offering deep heel cups for control, full cut for growth.

Pediatric UCBL & Gait Plates: Developed for little ones in need of support and minor correction. We can offer a number of accommodations to assist in gently guiding the foot into proper position. Backed by Children's Outgrowth Program.

Design Specifications:

- Rigid Polypropylene Shell
- Rearfoot Posting: Intrinsic
- Forefoot Posting: Intrinsic
- 1/16" Swirl Or Multicolor Microcell Top Cover.

Covering Material Options:

Our professional staff is always available to our customers for consultation.

Popular orthotic covering materials provide excellent shape retention and have versatile uses.



Left to Right - Crosslink, Neolon, Vinyl,
1/16 Microcloud

Provides flexibility, cushioning and are resistant to breakdown from moisture.



Left to Right - Suede, Bioskin, Nonslip,
Microcloud

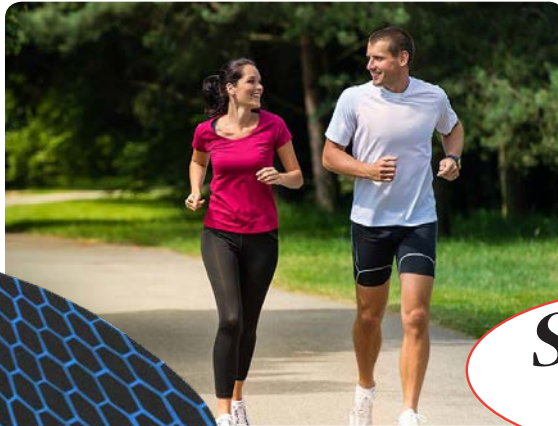
Breathable Stretchable and shock absorbing. Perfect for dress shoes.



Left to Right - Plastazote, Poron, Swirls

Provides ultimate cushioning, protects from abrasions, moisture deflection.

Benefits you can FEEL from our Full Length Anti-Microbial Prefabricated Orthotic



StrideLite Pro

Feather like comfort to provide cushioning and support where you need it most. The exclusive StrideLite technology contains three layers which include an anti-microbial top layer to reduce heat and slippage, a 3mm foam middle layer with a rigid polypropylene shell and a black reinforced EVA bottom layer. The triple layer enhances the stability and structure of the foot to relieve pain and discomfort.

Prescription-like foot support featuring built-in arch and heel support

Heat and slip reducing anti-microbial layer



EVA lightweight material that provides solid, stabilizing support

StrideLite Pro+

Feather like comfort to provide cushioning and support to get you off on the right foot every time.

When heated, our Prefabricated Moldable Inserts create a custom fit for your foot and footwear without losing their supportive shape. No two feet are exactly the same, so why compromise.

Customizable

Increase Balance

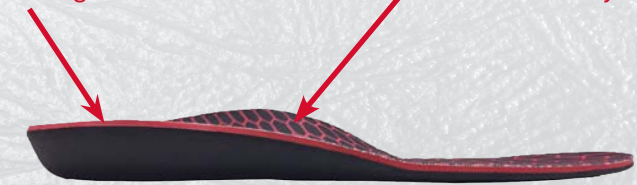
Reduce Foot Fatigue

Distribute Weight evenly throughout your Foot

Improve Alignment of your Ankle,

Customizable foot support through moldable footbeds

Heat and slip reducing anti-microbial layer



EVA lightweight material that provides solid, stabilizing support

Suggested L-Code: L3030



Heat Moldable Diabetic Inserts

StrideLite's heat moldable diabetic insert is designed for people with diabetes, arthritis and other conditions that result in sensitive feet. These insoles are constructed with a top layer material that has a uniform and fine cell structure, and conforms to the shape of the foot to provide maximum comfort and pressure relief. The base layer of heat moldable polyurethane measures 3/16" from the heel through the arch, tapering towards the toe, and has a durometer of Shore A 40. Coded A5512 for Medicare reimbursement when dispensed as part of the Therapeutic Shoe Bill.



Custom Diabetic Inserts

State-of-the-art scanning technology, provides an accurate 3D impression utilized for a custom fit diabetic insert that is Medicare-approved and specially tailored to accommodate the diabetic foot. CNC Routers and CAD/CAM software enable StrideLite technicians to bring these images to life precisely and efficiently, creating perfect direct milled insoles. Coded A5514

Toe Fillers

Made specifically for patients with Digital, Hallux, and Trans-Metatarsal amputations, these prosthetic devices are eligible for Medicare reimbursement and billable using the L5000 code

- Top Layer: Procell EVA designed to provide cushioning and reduce abrasions.
- Bottom Layer: EVA foam, Durometer of Shore A 40, holds the contoured shape of the inserts.



Leather Gauntlet AFO's

The Standard AFO stabilizes the ankle, talocalcaneal, midtarsal and subtalar joints. The AFOs are indicated for patients who experience the symptoms listed below:

- PTTD (Posterior Tibial Tendon Dysfunction)
- Talocalcaneal varus or valgus
- Tibialis tendonitis (posterior or anterior)
- Severe pronation or pes planus
- Ankle arthritis or DJD (Degenerative Joint Disease)
- Charcot foot
- Ankle, subtalar or midtarsal trauma
- Chronic Achilles tendonitis



Options

Colors: Black, Tan

Closure Options: Laces, Velcro, Combination

Additional Options:

Articulating - L1970

Dorsiflexion Assist - L2210

Tamarack - L2220

Pull Strap - L2270



StrideLite Summit Stabilizer

Promoting the patient's own ability to achieve a normal gait, safety, independence and dignity.

Fall Prevention Through Balance Correction

The Summit Stabilizer is a prescribed, custom made, comfortable Ankle Foot Orthosis (AFO), or brace, that is fabricated from a cast taken of the patient's lower leg in the corrected foot position. The Summit Stabilizer is frequently worn as a pair and designed to fit easily into the patient's own footwear.

When utilized in combination with a Fall Prevention Strength Training Program, the StrideLite Summit Stabilizer is covered by most insurance companies, including Medicare and Medicaid, when used to address conditions related to risk factors for falls.

Color: Black

Closure: Velcro

Coding:

- L1940, AFO molded to patient model
- L2330, Lacer molded to patient model
- L2820, Soft Interface Kit



AFO's Plastics

Solid Ankle AFO

Description: 3/16" or 1/4" polypropylene calf length

Clinical Indications: Dropfoot w/unstable knee, Osteo Arthritis

Diagnosis: Post CVA, Peroneal nerve injury, Post Polio, CP-OA

Suggested Codes: L1960

Optional Footplate for Varus Valgus Control Soft Interface:

L2275, L2820



Posterior Leaf Spring AFO

Description: Dorsiflexion assist calf length

Clinical Indications: Dropfoot stable knee

Diagnosis: Post CVA, Peroneal nerve injury

Suggested Codes: L1940

Optional Footplate for Varus Valgus

Control Soft Interface:

L2275, L2820

Crow Walker Boot

Description: Charcot restraints, Orthotic walker

Clinical Indications: Neuropathic ulcerations due to diabetes, Charcot deteriorations of the foot and/or ankle

Diagnosis: Charcot ankle and foot

Suggested Codes: L4631



Short Articulating AFO

Description: Full flexion ankle pivot, w/ low profile footplate

Clinical Indications: Stage II PTTD

Diagnosis: Chronic Ankle Instability

Suggested Codes: L1970, L2820

Optional Footplate for Varus Valgus Control Soft Interface: L2275



Short Articulating AFO w/ Dorsiflexion Assist

Description: Dropfoot w/o equinus, No Spasticity, Stable Knee
(Must have all 3)

Clinical Indications: Stage II PTTD

Diagnosis: Post CVA, Polio, Peroneal nerve injury

Suggested Codes: L1970, L2210 x 2, L2820

Optional Footplate for Varus Valgus Control Soft Interface: L2275

Short Articulating AFO w/ Posterior entry

Description: Oklahoma joints

Clinical Indications: Stage II PTTD, No Spasticity, Stable Knee

Diagnosis: Chronic Ankle, Instability

Suggested Codes: L1970, L2275, L2820



Copper Socks

Stride
Lite

CuTEC® USPTO EPO Patent Pending

CuTEC® is a unique and proprietary copper fiber that utilizes the qualities of copper and permanently binds copper to the fiber matrix of 1) polyester, 2) nylon and 3) spun polyester fibers.

These unique attributes allow for the production of knitted fabrics, woven fabrics, seamless apparel, glove inserts, socks, hosiery, narrow elastics, wound dressings, and much more.

The products that contain CuTEC® help reduce odor, improve hygiene and enhance the look and feel of the skin creating a healthier environment for the wearer.



Care Instructions:

Machine wash cold. Air dry machine dry low. No bleach.

Crew

S M L XL

White - J700-WC

Black - J700-BC



Quarter Crew

S M L XL

White - J700-WQ

Black - J700-BQ



Low Cut

S M L XL

White - J712-WHT

Black - J712-BLK



Sizes

S Women's 4-7

M Men's 6-8.5, Women's 7.5-10

L Men's 9-11, Women's 10.5-13

XL Men's 12-15





StrideLite Diabetic Socks are the industry leader featuring Alpha San[®] an Antimicrobial additive that utilizes the natural power of silver to provide comfort, odor protection, and moisture wicking control. Stride Lite Diabetic Socks are designed to reduce pressure, wrinkling, binding and bunching for optimal comfort.



MADE IN THE USA!

Description	Accommodates Shoe Size
White Crew	Female 5-9
	Male 6-12
Black Crew	Female 5-9
	Male 6-12

Description	Accommodates Shoe Size
White ¼ Crew	Female 5-9
	Male 6-12
Black ¼ Crew	Female 5-9
	Male 6-12

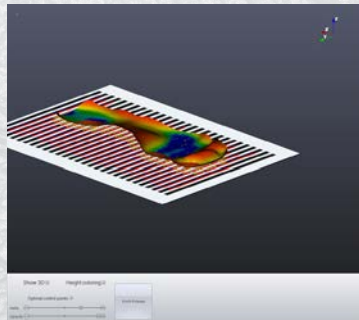
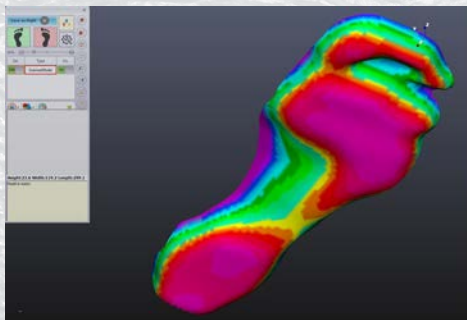


3D Scanning Options

The StrideLite scanning system provides custom orthotics and custom inserts with cutting edge technology that simultaneously captures both the arch height and bio-mechanical abnormalities.

- An affordable, effective scanning solution for practices that desire better outcomes at a fraction of the competitors cost.
- Customized order forms make prescribing devices easier than ever.
- Save money on casting materials and shipping costs
- Reduce turn around time
- Spend Less time casting and more time seeing a greater number of patients.
- Light, portable and easily moved from treatment rooms.
- User friendly software.
- Customer support available.

Multiple 3D Scanning Device Options To Fit Your Needs



Stride *Lite*

895 Home Ave.
Akron, OH 44310
1-800-998-4199

www.stridelite.net

